

EDUCATION PROGRAMS 2023-2024

**CITIES
OF THE
FUTURE**

New Movie
page 8



Cradle of Aviation Museum 

516-572-4066 • www.cradleofaviation.org

Create a personal connection to your lessons and drive classroom engagement with an unforgettable, entertaining, and educational class trip to the Cradle of Aviation Museum.

Now in our 21st year, thousands of school groups have been captivated by their experience at the Cradle of Aviation. Our Education Department will curate your day with affordable, customized programs from 30 minute lessons to a full day of education and activity to meet your needs. Led by educators, all of our classes and programs are STEM-based, hands-on, and developed to comply with the NYS Science Learning Standards.

Your students can walk through the history of flight and the rich history of our region through guided museum classes, theater shows and our Aerospace Quests. Additionally, they can enjoy lunch from our fully-operational cafeteria and visit our museum store. Each of our eight museum galleries will deliver a “WOW” moment as students travel through time with over 75 air and space craft from hot air balloons and kites to jet aircraft and an actual lunar module on the Moon.

Studies show that museum trips teach critical thinking, allow for real-world experiences, and improve test grades. And above all they are fun. When you ask students about some of their favorite memories from school, they often recall their eye-opening field trips.

So plan a visit to the Cradle of Aviation Museum and Education Center for an exciting, educational, and memorable adventure in a world-class museum, that’s right in your own backyard.

“Opportunities to learn STEM outside of school directly affects what is possible inside classrooms, just as what happens in classrooms affects out-of-school learning.”

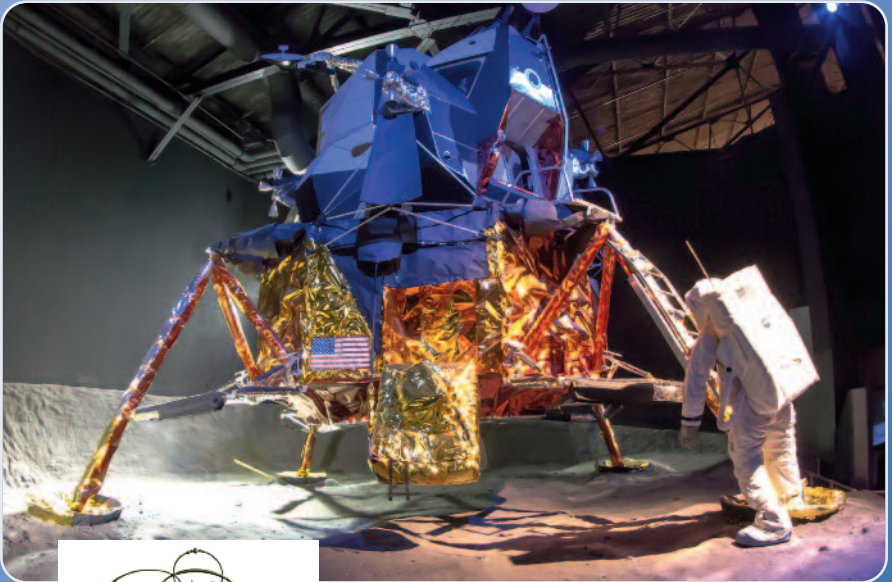
~ Report by the National Academies of Science, Engineering, and Medicine, August 2015.



Plan Your Trip

Museum Classes	4
Outreach Programs	6
Competitions	7
Professional Development	7
Dome Theater Planetarium	8
Schedule a Visit	10
Directions & Contact Information	11

To make a reservation please call (516) 572-4066



Support for our educational programs is provided in part by
The Berlin Family Foundation



Museum Classes

Secret Life of Ocean Currents

Grades 4–8



New! Secret Life of Ocean Currents grades 4–8 (30 minutes)

Through experimentation and demonstrations, students will dive into the world of ocean currents, learning how they move and affect life in the ocean and on land. By learning about the delicate balance between ocean temperatures and salinity students will gain an appreciation for the mechanisms that keep the oceans and the skies moving.

New! Exploring the Web of Life grades 2–5 (30 minutes)

Delve into the fascinating relationship between habitats and ecosystems. Discover how different habitats, from oceans to deserts, shape and influence the overall functioning of ecosystems and gain a deeper understanding of the interconnectedness of living organisms and their environment. Through a hands-on activity, students will create an intricate web of interactions within and between habitats to uncover their critical role in maintaining biodiversity and ecosystem health.

Mission mARs grades 5–8 (30 minutes)

Students will blast off on a mission to the red planet by using augmented reality software in this fast paced and fun program. They'll land a rover on the Martian surface, drive around and even have a chance to interact with virtual 3D objects, all while learning about the machines we sent to our celestial neighbor.

Mars by Remote grades 2–4 (30 minutes)

Do you have what it takes to be a coder? Join us for this exciting program where your young learners are introduced to the basics of robotics, aeronautics, and programming. Students will plot a course on a map of the red planet and then code a simple rover to autonomously get from point A to point B.

Physics at Play grades 2–9 (30 minutes)

What do your favorite sports and toys have in common? They all follow the laws of physics! In this interactive lesson, students will learn how physics is at the foundation of sports and games and how they can better understand their favorite activities by understanding the science behind them.

Find-a-Flight grades 3–8 (30 minutes)

Ever see an airplane up in the sky and wonder where it is going? In this lesson, students will learn about flight tracking software and use it to plot the routes of airplanes flying into, out of, and over New York. They'll learn about different places in our own country and around the world.

Museum Classes



Code-a-Drone

Grades 5–12

Code-a-Drone grades 5–12 (30 minutes)

Drones are becoming more and more a part of everyday life and in this hands-on program, students will learn how they function. Students will learn how drones are programmed to fly safely and then have the opportunity to code a drone of their own to fly over, under, and around obstacles.

How Does it Fly grades 1–8 (30 minutes)

What are lift, drag, thrust and gravity? They are just a few of the concepts explored in this hands-on program that covers the scientific principles of flight and how people used them to conquer the sky.

Living in Space all grades (30 minutes)

There are many things one needs to know before venturing up into space...like how does one go to the bathroom? The most common and practical questions will be answered on what life is like in space. Students will discover where to sleep, what kind of food is available, what astronauts wear and what some hazards are.

3,2,1 Blastoff grades 4–12 (30 minutes)

Can you imagine taking off in a rocket with powerful boosters? Rockets are the cornerstone of space exploration and help us to better understand our universe! Learn more about how rockets propel people and machines beyond Earth's atmosphere while experimenting with basic types of rockets.

Kites grades K–3 (30 minutes)

3000 years ago people in China invented the first kites and today most of us have attempted to fly one. Learn how kites were precursors to other flying machines and build your own.

Guided Tour all grades (50 minutes)

From ballooning to the Moon...an evolution of aviation, all in under an hour. This museum educator-led program will take your group through the museum's collections focusing upon major events and aircraft in aviation history. Inquiry-based learning will help students interpret the history of aviation on Long Island according to the age level and needs of each group. ENL option is available upon request.

➡ September-October save \$2.00 per student on museum/theater combo tickets!

➡ April, choose one of our new 30-minute classes free!

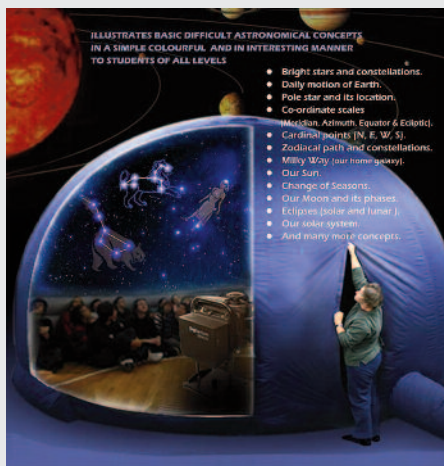
All classes comply with national and state standards.

Outreach Programs

Museum Outreach - We Come to You!

Make learning come alive for children and adults in a variety of settings from schools, libraries, camps, scout meetings to community centers. Led by museum educators, all programs use hands-on demos to promote the museum's philosophy of inspiring and educating while entertaining. Visit www.cradleofaviation.org/outreach for a complete list of available classes.

Digitalis Digitalium Portable Inflatable Planetarium!



Digitalis is a portable, inflatable planetarium dome that can accommodate up to 30 people per class session. Once inside the dome, discover the majesty of the stars and our universe with its digital technology designed to showcase bright, clear images. The Digitalis dome has a stand-up entrance permitting easy entry for students and teachers, offers interactive learning opportunities and is best suited for your gym or auditorium.

Nassau County Outreach Pricing for Classes & Planetarium Programs:

45 Minute Base Class	\$400.00
45 Minute Base Planetarium Program	\$550.00
Additional Same-Day Classes/Programs	\$60.00

Please call for outreach pricing in Suffolk, Queens and Kings counties.

Outreach programs for schools are age-appropriate and designed to address New York State Learning Standards. To find out more, book a program, or even create customized activities call (516) 572-4029.

Competitions

Annual Competitions



2023-2024 Competitions

KidWind - October 25

Egg Drop - March 14

Future World City
Showcase - June 3

\$5 add-on per student
with museum admission



Please visit [cradleofaviation.org/comp](https://www.cradleofaviation.org/comp) for details

Professional Development

CTLE Certified Teacher Workshops

Join the Museum for interactive learning opportunities designed for the teacher. Topics are held quarterly and run approximately 2-3 hours. Workshops include Intro to Drones; The Body in Space; Wind Turbine Construction; and more!

To learn more about our professional development programs and to register, please visit: **www.cradleofaviation.org/pd**

In addition to these offerings, we would be thrilled to design a professional development program for you, your school or your district based on your curriculum. For rates on a custom professional development program, please contact us at 516-572-4029.

Free Previews for Teachers

If you would like to see what we offer for programs, preview a theater show or to just take a look around, do not hesitate to call! Teacher screenings and sneak peeks are free here at the Cradle. You can even have your staff come for a day of Professional Development where we will create a schedule for you to sample a little bit of everything. Reservations are required. Please call (516) 572-4028.

Dome Theater Planetarium

NEW! Cities of the Future - Grades 3+ - Coming Winter 2024

Imagine stepping 50 years into the future and finding smart cities designed to be totally sustainable. Renewable energy is our primary power source, space-based solar power provides solar energy 24 hours a day, everything is recycled, and you have your own individualized pods that run on maglev trains using little or no energy. You can also ride an electric flying vehicle! Traffic jams are a thing of the past. This is not science fiction. Engineers are making plans for a sustainable world right now. And it's coming to the giant screen!

NEW! Ocean Odyssey - All grade levels

500 million years ago, life left this blue womb and colonized the land, but we are still intricately linked to the ocean. Our climates, coastlines, ecosystems, and economies are tied to the perpetual movement of water between continents. The great ocean currents are the arteries and veins of Planet Earth! This is the story of one particularly fascinating flow – the East Australian Current, a massive oceanic river that stretches the length of Australia's east coast.

Junior Jetsetters - Grades Pre-k–2nd

Spark your students' curiosity with an introduction to astronomy. Students will look at constellations, hear stories, and take space steps all while learning astronomy vocabulary. Then, you can either explore the night sky with your favorite friends from Sesame Street in *One World, One Sky: Big Bird's Adventure*, or follow a daring 1000-day mission to fly an international crew to the red planet and return them safely to Earth, in *Mars 1001*.

Touch the Stars - Grades 4+

Touch the Stars centers on mankind's probes used in exploration of our solar system and the galaxy beyond. Trace the path to space through the history of NASA's probes, orbiters, and landers, from the heart of our solar system to the outer planets and beyond.

Mars 1001 - All grade levels

Follow fictional space reporter Miles O'Brien as he guides you through the first human mission to Mars — a daring 1000-day mission to fly an international crew to the red planet and return them safely to Earth.

Moons of our Solar System! - Grades 1–4

Students will learn what a moon is, what causes its phases, and how we are exploring these natural satellites.

Solar System Tour - All grade levels

Our Solar System has everything you could want! Planets! Moons! Asteroids! and Comets! All swirling around our one and only star, the Sun. Students will learn all the different objects that populate the Solar System and get a glimpse at the force that keeps worlds spinning.

Current Night Sky - All grade levels

Students will travel through the seasonal night sky to learn about constellations, hear mythical stories, and observe the magnificent Long Island sky.

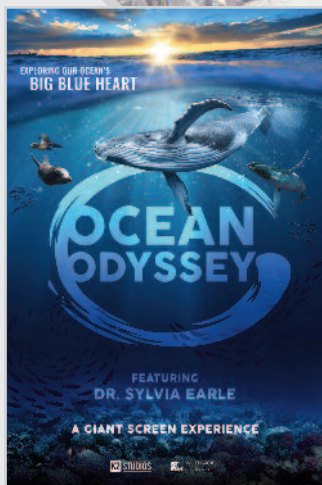


Sky Theater Planetarium

LEROY R. & ROSE W. GRUMMAN
DOME THEATER

CITIES OF THE FUTURE

Coming Winter 2024



Our full-dome theater is a large-scale immersive environment, featuring real-time digital planetarium, visualization and simulation space and large-format cinema.

Join us for an immersive experience in our Dome Theater and ask about accessibility too! Limited live programs are available in Spanish and open captioning for films also available. Ask for more details when booking your program!

Schedule a Visit

Please call reservations, Mon.-Fri, 10:00-4:00 at (516) 572-4066

Booking - The following information is needed when booking.

- Date of visit
- Arrival and departure times
- Number of visitors including both children and adults
- Grade(s) of school group
- Chosen options
- Contact details
- Lunch requirements: purchase special box lunch or bring your own

Arrival

- Please arrive on time and leave book bags on the bus
- Lunches will be collected and held until lunch time
- Review museum schedule
- Before disembarking your group, please check in at the Box Office
- If you should come late, rescheduling dome show times and educational programs are contingent upon ticket and educator availability

Requirements

- Supervision requirements is no fewer than one adult per ten children
- 1-week notice is required for reservation adjustments
- Adult chaperones are responsible for keeping their groups together and maintaining order
- NO FOOD, DRINK, GUM or BACKPACKS are permitted in the museum

School Group Rates

Museum	Theater Show	Museum & Theater Show	Museum Classes (30 min.)	Museum Classes (50 min.)
\$10.00	\$10.00	\$17.00	\$2.00	\$3.00

- We accept cash, checks made payable to the Cradle of Aviation Museum, Master Card, Visa and AMEX.
- Payments must be made two weeks prior to date of visit
- We reserve the right to cancel your reservation if payment is not made and a representative can not be contacted
- No refunds will be given if group numbers decrease the day of your visit

SPECIAL DISCOUNTS DURING OFF-PEAK PERIODS!

- > September and October – save \$2.00 per student on a museum ticket when combined with a theater ticket purchase.
- > April, add-on one of our new 30-minute classes free!

Directions & Contact Info

Directions for Buses: Long Island Expressway, exit 39S, Glen Cove Road South. Glen Cove Road turns into Clinton Avenue. when you cross Old Country Road. Make a left onto Stewart Avenue. Take Stewart until you reach Eisenhower Park and make a right onto Merrick Avenue. On Merrick make a right at the first light onto Charles Lindbergh Blvd. Go two traffic lights on Charles Lindbergh and make a right into our parking lot. The entrance is the glass fronted Reckson Center building.



Hours

Monday: Open for Groups (Min. 100)
Tuesday–Sunday: 10:00–5:00

Address

Cradle of Aviation Museum
Charles Lindbergh Blvd.
Garden City, NY 11530

Reservations

(516) 572-4066

Reservations Fax

(516) 572-1312

Follow Us



More info at www.cradleofaviation.org/education

MacArthur Airport STEM Partnership

Now Boarding!



This new collaborative partnership aims to inspire students to consider career pathways in aviation and aerospace through interactive education experiences. The Airport will open its doors affording schools from our East End better accessibility to hands-on inquiry-based STEM program opportunities from the Museum. With a special focus on aerospace and aviation, students in grades 5 – 12 will have the ability to select from a suite of programs aligning with District curriculum goals and student needs to ensure a high quality and memorable experience

This partnership is made possible in part by



STEM Partnerships

Thinking of expanding your students' visit beyond a traditional field trip experience - we are too! The Museum offers STEM partnership programs with individual districts affording students access to museum coursework and hands-on opportunities that may otherwise not be available to them. How? By expanding project-based learning through multiple visits either in the comforts of your classroom or at the Museum!

For information on partnership collaborations and programs please call, 516-572-4028.

